

Coagulome tumoral et chirurgie de précision des cancers tête et cou

Zuzana SAIDAK, UR7516 CHIMERE, UPJV



9 Octobre 2024



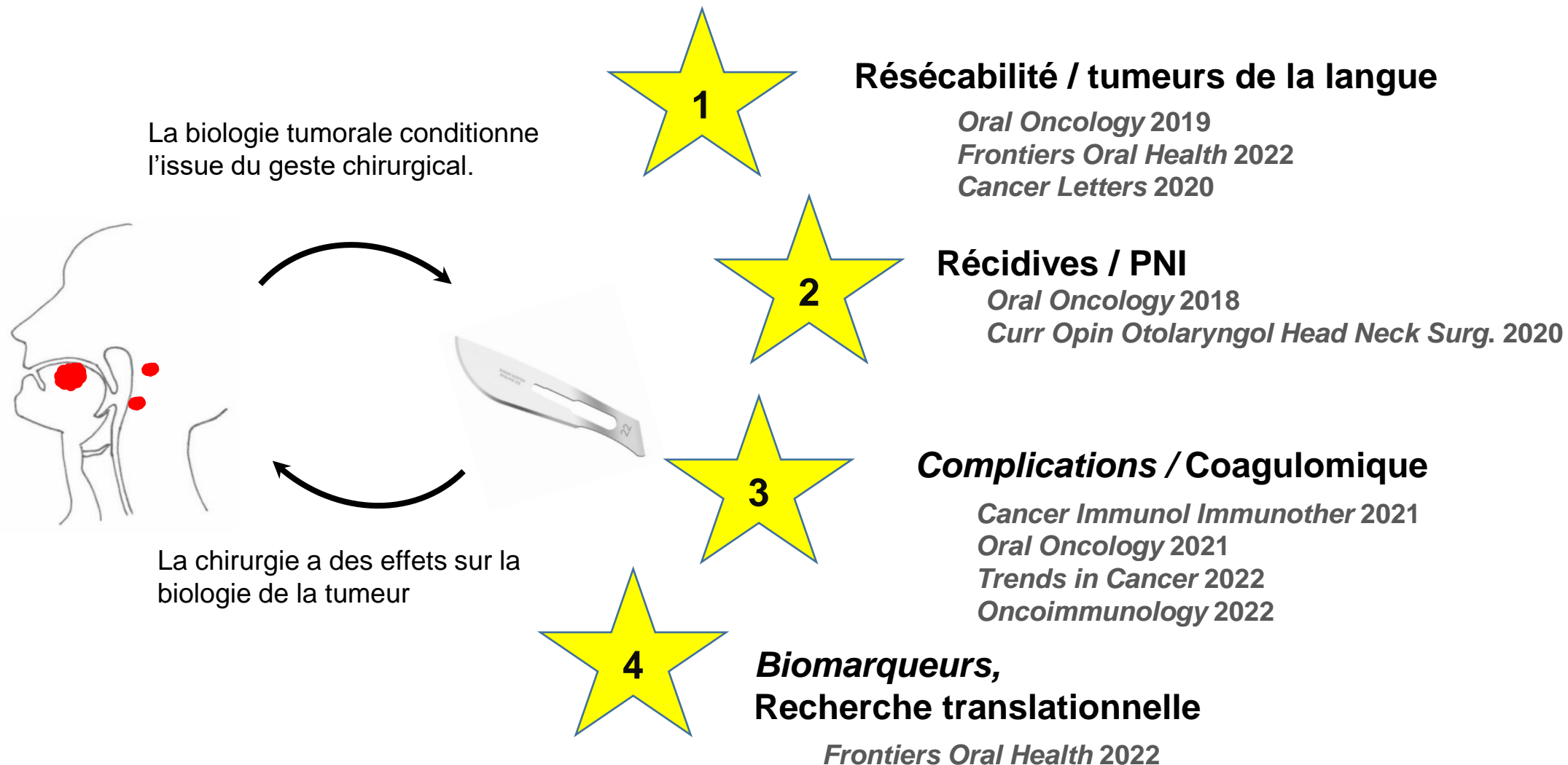
Laboratoire CHIMERE (UR7516)



Cancers tête et cou
= des indications chirurgicales

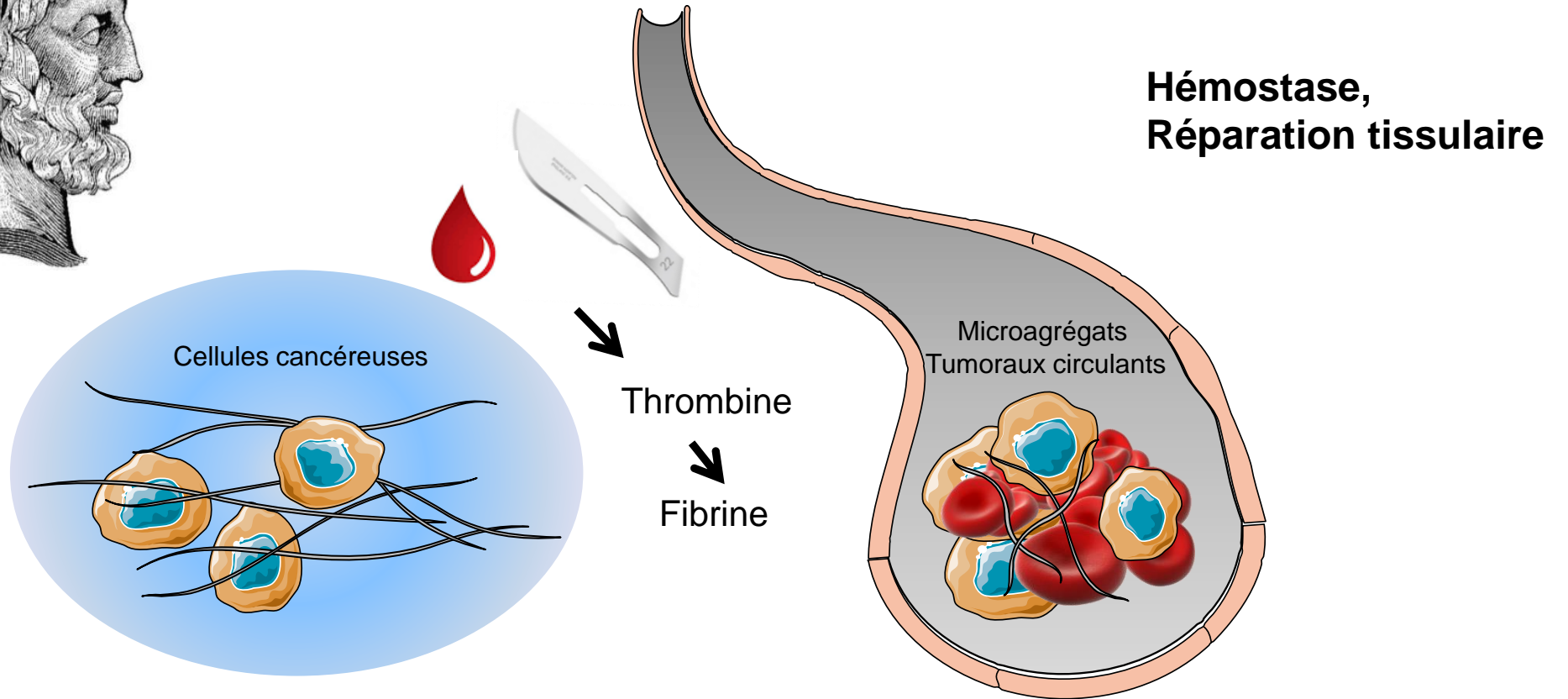
Est-ce que la biologie tumorale
conditionne l'issue du geste chirurgical ?
Etudes de systèmes ++++

Chirurgie & biologie des Cancers tête et cou



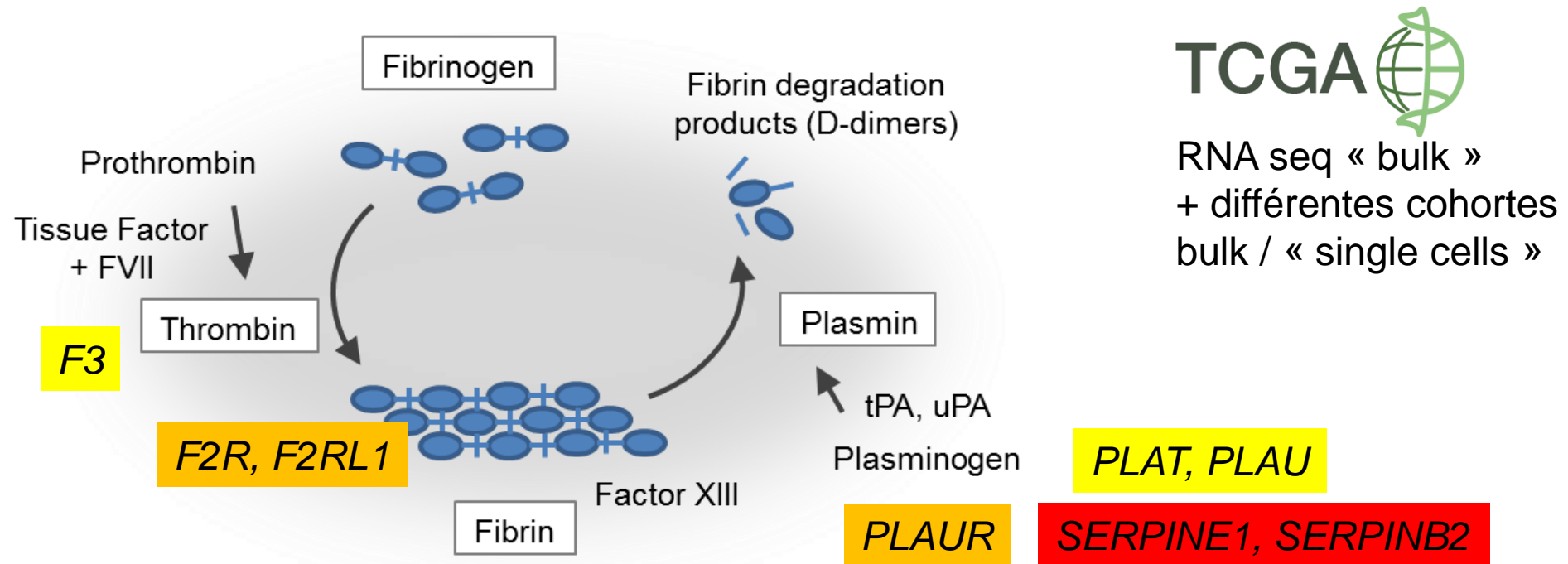


Coagulation et chirurgie



**Risque thromboembolique (anticoagulants +++)
action sur dissémination hématogène ?**

Etude du *coagulome* tumoral



TCGA

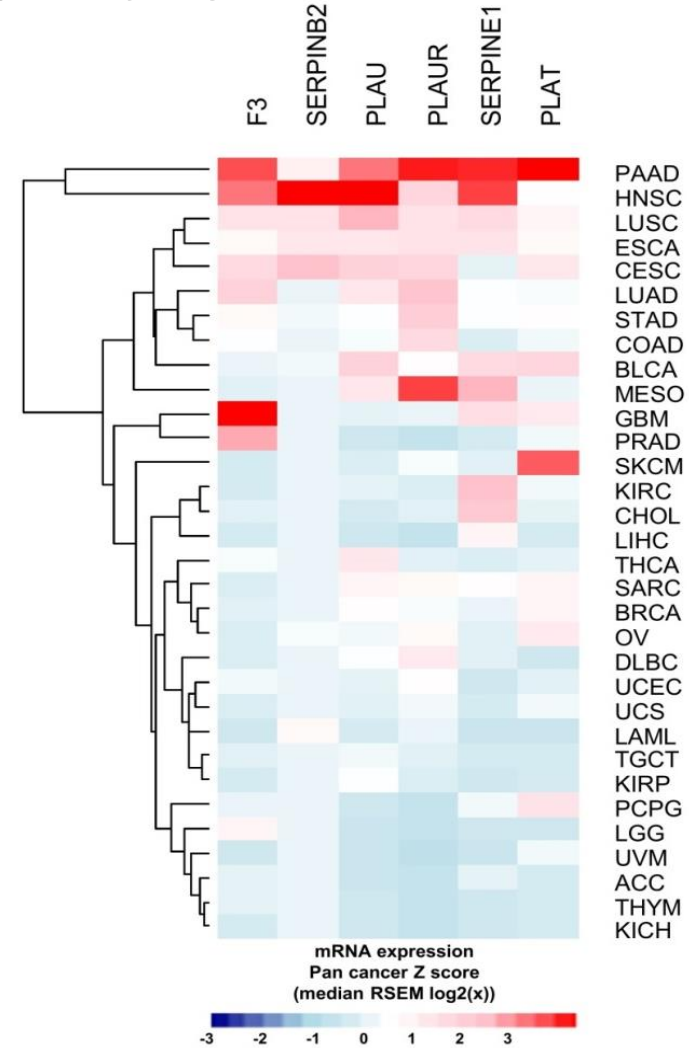
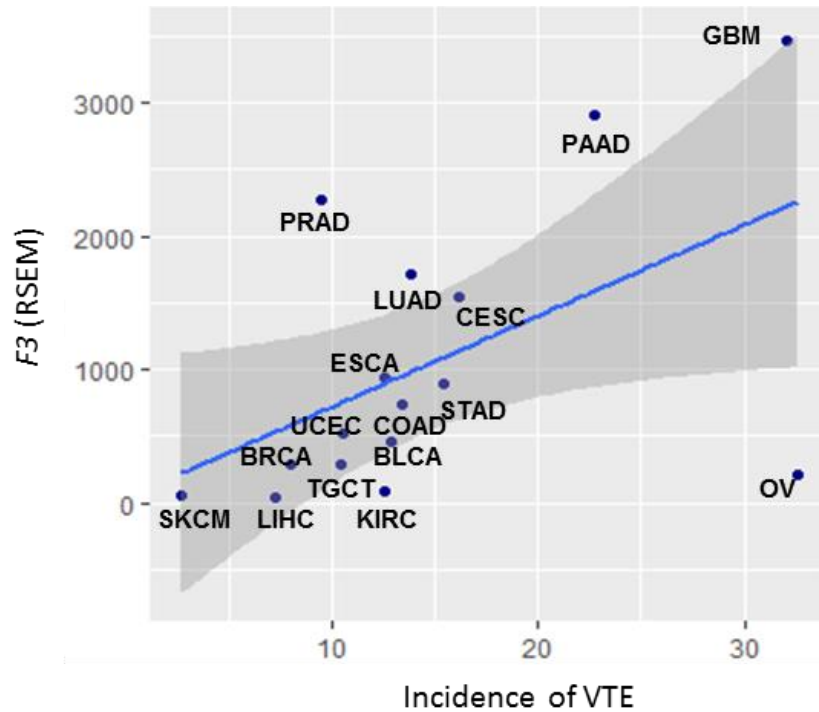
RNA seq « bulk »
+ différentes cohortes
bulk / « single cells »

Saidak et al., *Cancer Immunol Immunother* 2021

Lottin ... Saidak. *Cancers* 2022

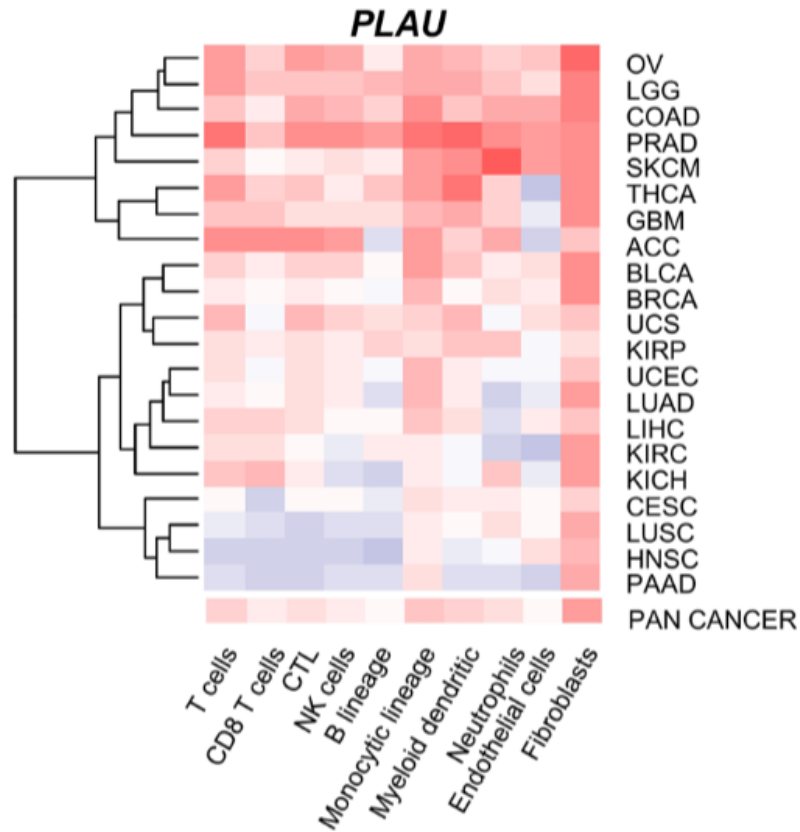
Galmiche .. Saidak, *Trends Cancer*. 2022

Etude pan-cancer: Un profil coagulomique spécifique pour chaque type de tumeur primaire



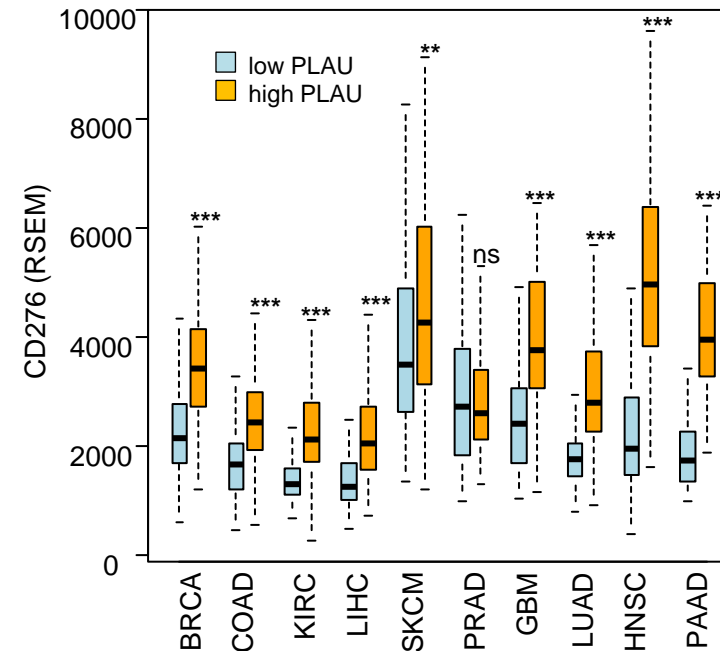
Saidak et al., *Cancer Immunol Immunother* 2021

Coagulome et composition cellulaire du Microenvironnement tumoral



Tumeurs fibrinolytiques =
stromales et riches en
monocytes-macrophages ?

CD276 in high vs low PLAU tumors

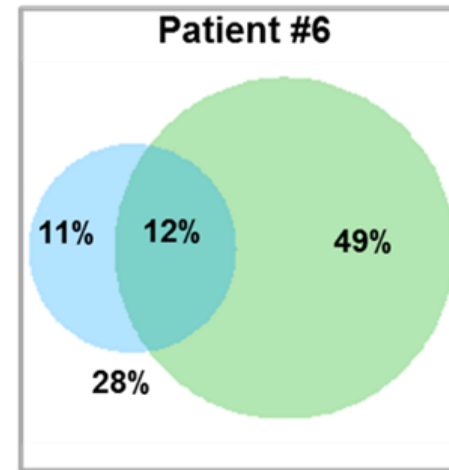
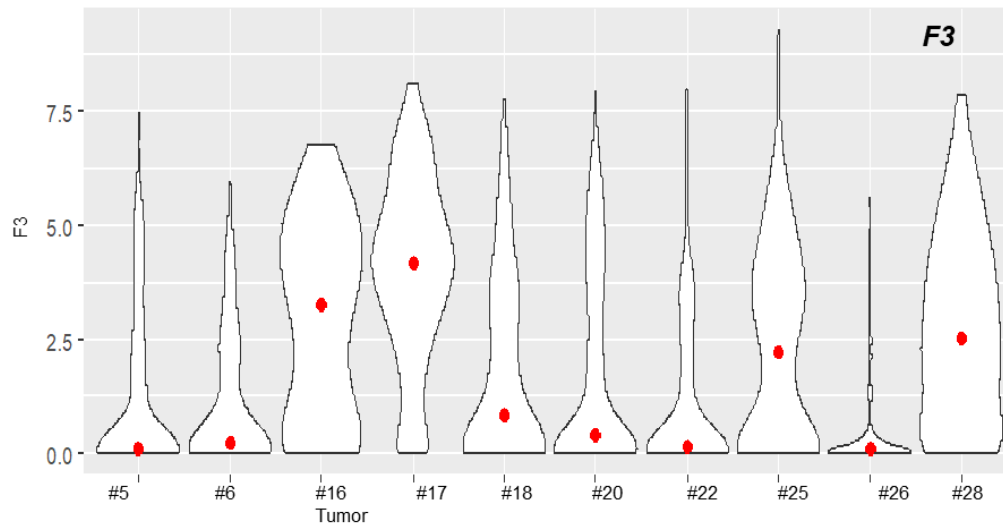
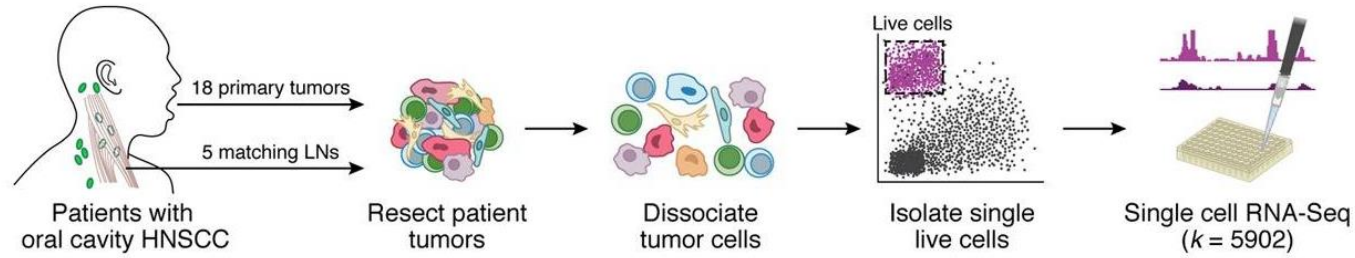


Cibler coagulation / fibrinolyse pour améliorer
immunité anti-tumorale ?

Repurposer biomarqueurs de coagulation ?

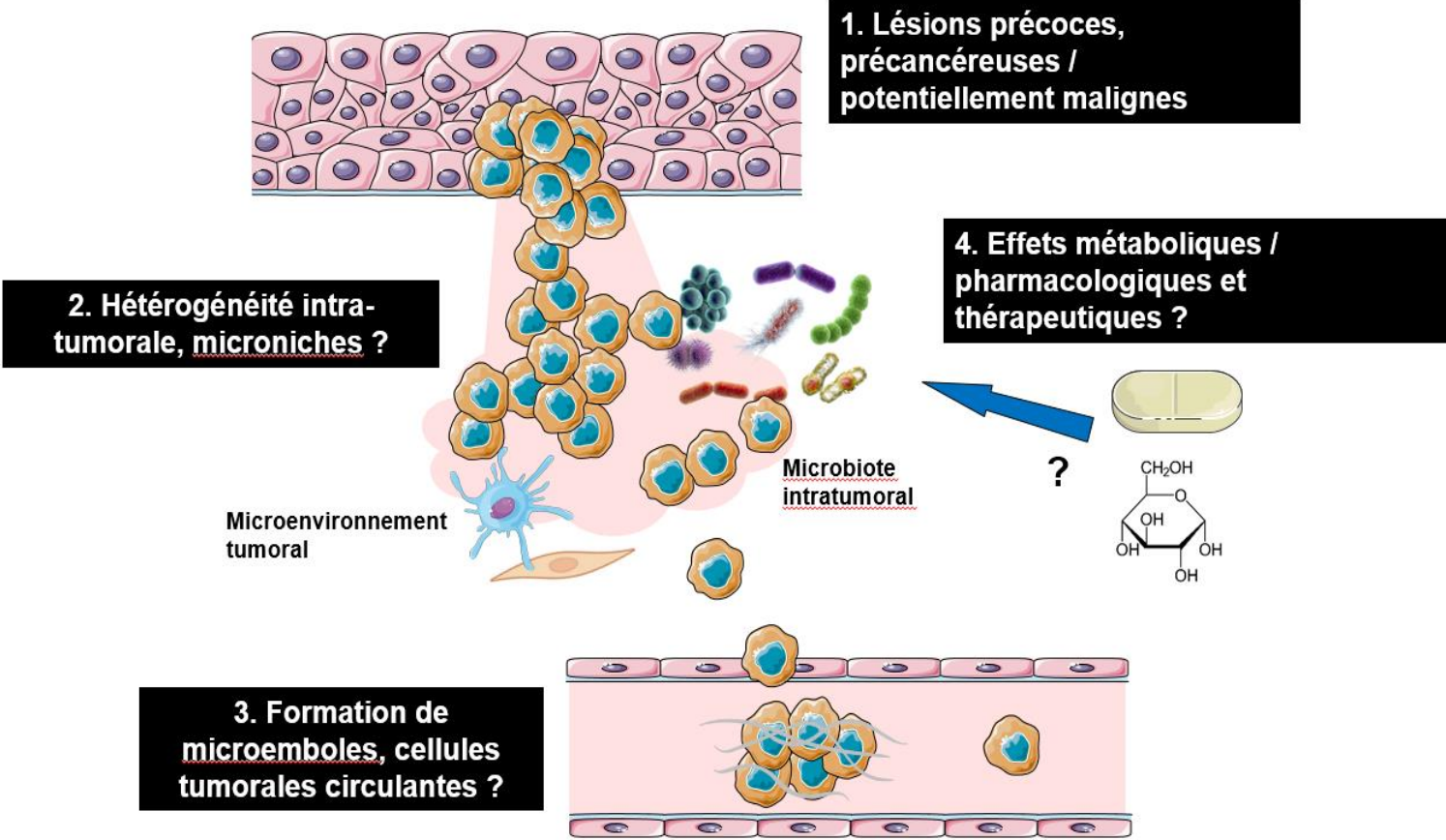
Saidak et al., *Cancer Immunol Immunother* 2021
Galmiche et al., *Oncoimmunology* 2022

Le coagulum des tumeurs de la cavité orale à l'échelle cellulaire

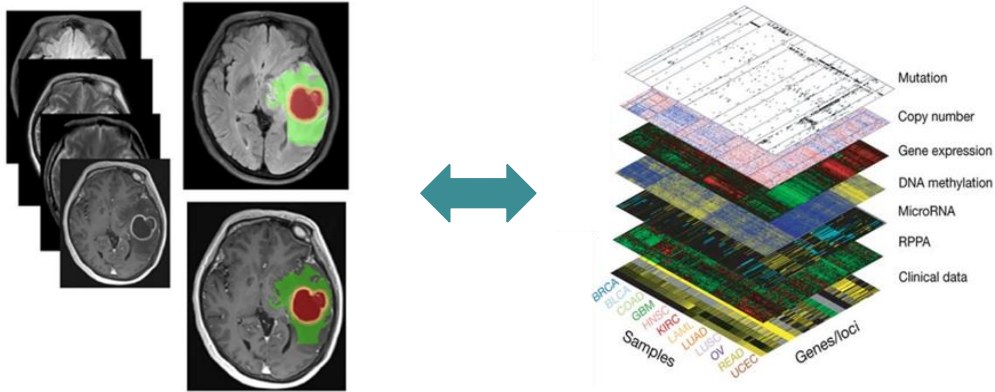


Lottin, Cancers 2022

Dynamique du coagulome ? Coagulomique des états cancéreux avancés ?



Explorations non-invasives du coagulome ?



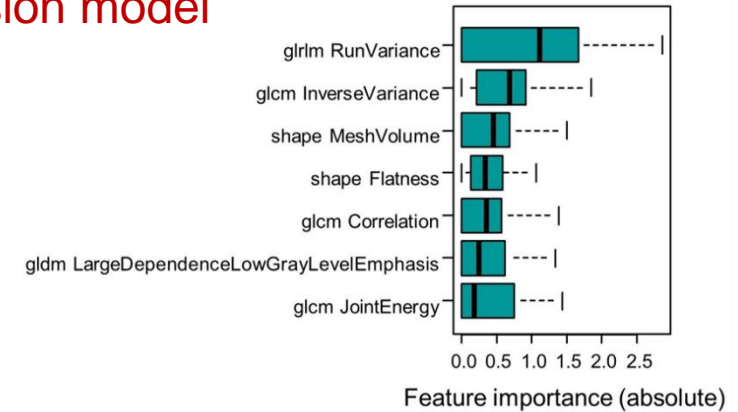
Radiomics

Genomics

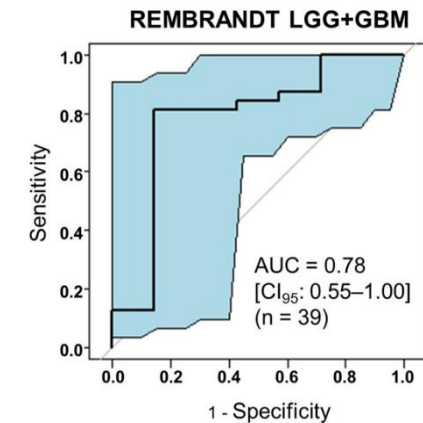
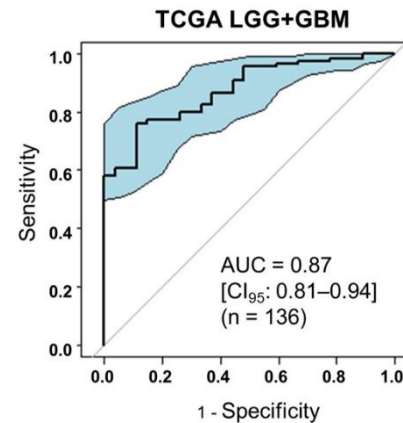
Radiocoagulomics ?

Saidak et al. *Cancers* 2024

7 radiomics features selected (LASSO)
logistic regression model



ROC for detection of top 20% *hypercoagulable* gliomas



Remerciements

Antoine Galmiche

Christophe Louandre

Corinne Godin

Claire Lailier

Floriane Racine

Marine Lottin

Caroline Pascual

Marie-Antoinette Sevestre

Simon Soudet

Jean-Marc Constans

Bruno Chauffert

Florian Clatot

Sylvie Testelin

Emilien Colin

Lucie Desjardins



Université de Picardie Jules Verne
La Ligue Contre le Cancer
CHU Amiens

